



# XLI

## Fund Details

Trading Symbol	XLI
Price	\$88.63
Distributions	Quarterly
Expense Ratio	0.13%
Number of Holdings	73
Short Selling	Yes
Options	Yes

## Index Details

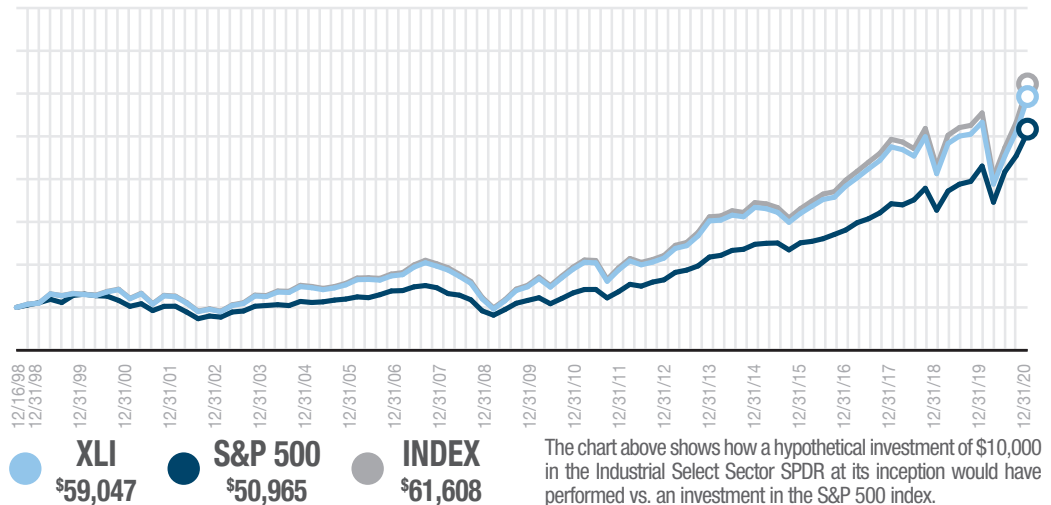
Index Symbol	IXI
Index Dividend Yield	1.55%†

† Yield as of 12/31/20

**The Industrial Select Sector SPDR** invests in a wide array of industrial companies. Industries in this SPDR include aerospace and defense, building products, construction and engineering, electrical equipment, conglomerates, machinery, commercial services and supplies. There are 73 companies in the Industrial Select Sector SPDR.

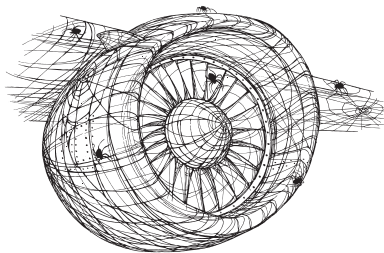
## INDUSTRIAL SELECT SECTOR SPDR VS. THE S&P 500 INDEX

Comparison of change in value of a \$10,000 Investment from 12/16/98\* to 12/31/20



## PERFORMANCE

As of 12/31/20



	Latest Quarter	Year to Date	Annualized				
			One Year	Three Year	Five Year	Ten Year	Since Inception*
Total Returns (Net Asset Value)	15.62%	10.83%	10.83%	7.54%	13.06%	12.05%	8.36%
Total Returns (Market Close)	15.59%	10.80%	10.80%	7.49%	13.05%	12.03%	8.35%
Industrial Select Sector Index	15.68%	11.06%	11.06%	7.71%	13.25%	12.24%	8.60%
S&P 500 Index	12.15%	18.40%	18.40%	14.18%	15.22%	13.88%	7.32%
AFTER-TAX Pre-Liquidation Total Returns (Net Asset Value)	15.42%	9.96%	9.96%	6.92%	12.43%	11.49%	7.90%
AFTER-TAX Post-Liquidation Total Returns (Net Asset Value)	9.24%	6.31%	6.31%	5.64%	10.26%	9.87%	7.03%

All total return figures assume reinvestment of dividends and capital gains at net asset value; actual returns may differ.

Performance data quoted represents past performance. Past performance does not guarantee future results. Investment return and principal value of an investment will fluctuate so that an investor's shares, when sold or redeemed, may be worth more or less than the original cost. Current performance data may be higher or lower than actual data quoted. For the most current month-end performance data please visit [www.sectorspdrs.com](http://www.sectorspdrs.com).

Select Sector SPDR Funds bear a higher level of risk than more broadly diversified funds.

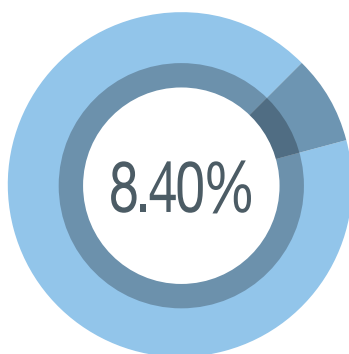
After-tax returns are calculated using the historical highest individual federal marginal income tax rates and do not reflect the impact of state and local taxes. Actual after-tax returns depend on the investor's tax situation and may differ from those shown. The after-tax returns shown are not relevant to investors who hold their fund shares through tax-deferred arrangements such as 401(k) plans or individual retirement accounts.

Market price returns are based on the midpoint of the bid/ask spread at 4 p.m. ET and do not represent the returns an investor would receive if shares were traded at other times.

\* Fund Inception date is 12/16/1998.

† Index Dividend Yield Calculation - The sum of gross dividend per share amounts that have gone ex-dividend over the prior 12 months, divided by 1/10th of the Index value. All Cash Dividend types are included in this yield calculation.

Source: Bloomberg



Percentage is the estimate weight of the index components in the S&P 500 as of 12/31/20.

## PORTFOLIO STATS

P/E Ratio	24.66
P/B Ratio	4.67
Median Market Cap	28.03B
Beta	1.18
Average Daily Trading Volume	10,765,420
Correlation to S&P 500 <sup>^</sup>	0.94

Source: Bloomberg, AltaVista Research

<sup>^</sup> 3yr correlation: 12/31/17-12/31/20

## INDUSTRY BREAKDOWN

1. Machinery	19.75%
2. Aerospace & Defence	19.13%
3. Industrial Conglomerates	14.67%
4. Road & Rail	12.01%
5. Air Freight & Logistics	7.98%
6. Electrical Equipment	5.75%
7. Building Products	5.40%
8. Commercial Services & Supplies	4.98%
9. Professional Services	3.96%
10. Airlines	3.08%
11. Trading Companies & Distributors	2.38%
12. Construction & Engineering	0.91%

Source: Bloomberg

## Holdings and Weightings

Honeywell Intl (HON)	5.61%	Copart (CPRT)	0.99%
Union Pacific (UNP)	5.27%	Delta Air Lines (DAL)	0.96%
United Parcel Service B (UPS)	4.53%	Fortive (FTV)	0.90%
Boeing (BA)	4.27%	Equifax (EFX)	0.88%
Raytheon Technologies (RTX)	4.08%	Republic Services (RSG)	0.76%
3M (MMM)	3.79%	Kansas City Southern (KSU)	0.72%
Caterpillar (CAT)	3.72%	Old Dominion Freight (ODFL)	0.71%
General Electric (GE)	3.55%	W.W. Grainger (GWW)	0.69%
Lockheed Martin (LMT)	3.28%	Xylem (XYL)	0.69%
Deere (DE)	3.17%	Dover (DOV)	0.68%
CSX (CSX)	2.61%	Ingersoll Rand (IR)	0.64%
FedEx (FDX)	2.36%	United Rentals (URI)	0.63%
Norfolk Southern (NSC)	2.27%	Expeditors Intl of WA (EXPD)	0.60%
Illinois Tool Works (ITW)	2.21%	IDEX (IEX)	0.57%
Emerson Electric (EMR)	1.81%	Masco (MAS)	0.54%
Eaton (ETN)	1.80%	Teledyne Technologies (TDY)	0.54%
Northrop Grumman (NOC)	1.78%	Jacobs Engineering (J)	0.53%
Waste Management (WM)	1.72%	Wabtec (WAB)	0.49%
Roper Technologies (ROP)	1.70%	United Airlines (UAL)	0.48%
L3Harris Technologies (LHX)	1.49%	CH Robinson (CHRW)	0.48%
Parker-Hannifin (PH)	1.32%	Fortune Brands (FBHS)	0.45%
Trane Technologies (TT)	1.31%	J.B. Hunt Transport (JBHT)	0.43%
General Dynamics (GD)	1.30%	Howmet Aerospace (HWM)	0.42%
Johnson Controls Int'l (JCI)	1.27%	Textron (TXT)	0.41%
Verisk Analytics (VRSK)	1.27%	Allegion (ALLE)	0.40%
TransDigm (TDG)	1.27%	Quanta Services (PWR)	0.37%
IHS Markit (INFO)	1.26%	American Airlines (AAL)	0.36%
Cummins (CMI)	1.26%	Snap On (SNA)	0.35%
Cintas (CTAS)	1.17%	Pentair (PNR)	0.33%
Carrier Global (CARR)	1.15%	Rollins (ROL)	0.33%
PACCAR (PCAR)	1.12%	A.O. Smith (AOS)	0.28%
Rockwell Automation (ROK)	1.09%	Nielsen Holdings (NLSN)	0.28%
Stanley Black & Decker (SWK)	1.07%	Robert Half Intl (RHI)	0.27%
Fastenal (FAST)	1.05%	Huntington Ingalls (HII)	0.26%
AMETEK (AME)	1.05%	Alaska Air (ALK)	0.24%
Southwest Airlines (LUV)	1.03%	Flowserve (FLS)	0.18%
Otis Worldwide (OTIS)	1.03%		

**There is no assurance that XLI currently holds these securities.**  
Holdings and weightings are updated daily at [www.sectorspdrs.com](http://www.sectorspdrs.com).

## Legal Disclosure

There are no sales loads on Select Sector SPDR shares but ordinary brokerage commissions apply and this expense is not reflected in performance calculations.

The S&P 500 is a product of S&P Dow Jones Indices LLC (“SPDJ”) and has been licensed for use by State Street Global Advisors (State Street). Standard & Poor’s®, S&P®, S&P 500®, and SPDR® are registered trademarks of Standard & Poor’s Financial Services LLC (“S&P”); and these trademarks have been licensed for use by SPDJ and sublicensed for certain purposes by State Street. State Street’s Select Sector SPDRs are not sponsored, endorsed, sold or promoted by SPDJ, Dow Jones, S&P, their respective affiliates, and none of such parties make any representation regarding the advisability of investing in the Select Sector SPDRs nor do they have any liability for any errors, omissions, or interruptions of the S&P 500 Index.

You cannot invest directly in an index.

The S&P 500 is an index of 500 common stocks that is generally considered representative of the U.S. stock market. The index is weighted toward stocks with large market capitalizations and represents approximately two-thirds of the total market value of all domestic common stocks. The S&P 500 index figures do not reflect any fees, expenses or taxes.

The Select Sector SPDR Trust consists of eleven separate investment portfolios (each a “Select Sector SPDR ETF” or an “ETF” and collectively the “Select Sector SPDR ETFs” or the “ETFs”). Each Select Sector SPDR ETF is an “index fund” that invests in a particular sector or group of industries represented by a specified Select Sector Index. The companies included in each Select Sector Index are selected on the basis of general industry classification from a universe of companies defined

by the S&P 500®. The investment objective of each ETF is to provide investment results that, before expenses, correspond generally to the price and yield performance of publicly traded equity securities of companies in a particular sector or group of industries, as represented by a specified market sector index.

Asset allocation cannot assure a profit nor protect against a loss.

Select Sector SPDRs are subject to risk similar to those of stocks including those regarding short-selling and margin account maintenance.

All ETFs are subject to risk, including possible loss of principal. Sector ETF products are also subject to sector risk and non-diversification risk, which will result in greater price fluctuations than the overall market.

**An investor should consider investment objectives, risks, charges and expenses carefully before investing. To obtain a prospectus, which contains this and other information, call 1-866-SECTOR-ETF (866-732-8673) or visit [www.sectorspdrs.com](http://www.sectorspdrs.com). Read the prospectus carefully before investing.**

**ALPS Portfolio Solutions Distributor, Inc., a registered broker-dealer, is distributor for the Select Sector SPDR Trust.**



# DEFINITIONS

## **P/E Ratio**

A valuation ratio of a company's current share price compared to its per-share earnings. It is calculated by dividing the market value per share by earnings per share.

## **P/B Ratio**

A ratio used to compare a stock's market value to its book value. It is calculated by dividing the current closing price of the stock by the latest quarter's book value (book value is simply total assets minus intangible assets and liabilities).

## **Median Market Cap**

The midpoint of the range of the individual market capitalizations for each sector. The market capitalization is defined as the value of a company, that is, the market value of its outstanding shares. This figure is found by taking the stock price and multiplying it by the total number of shares outstanding.

## **Beta**

A measure of a security's or portfolio's volatility, or systematic risk, in comparison to the market as a whole. Also known as "beta coefficient".

## **Volume**

The number of shares or contracts traded in a security or an entire market during a given period of time. It is simply the amount of shares that trade hands from sellers to buyers as a measure of activity.

## **Correlation**

A measure that determines the degree to which two variable's movements are associated.